

Product & Packaging: Carton and Display Packaging Requirements

Carton Packaging General Requirements

The following requirements are intended to ensure that products travel from factory of manufacture, through our Distribution Centers and to the customer with minimal damage. Failure to meet these requirements may result in chargeback.

Shipping Carton Strength Requirements

The exterior packaging must be of sufficient strength to withstand the stress and pressure exerted by the weight of the contents in each package.

The packaging must be able to withstand the stress of a Conveyor System and transit. Crushed or damaged cartons cannot be processed through the Conveyor System.

We require the same considerations for the Inner Packs of Bust Outs and Break Pack Cartons. The following table will show industry standards related to single wall corrugated cardboard. The same requirements shall be used for display cartons.

Maximum Gross Weight	Bursting Test	Flute Size	Minimum Edge Crush Test
10 lbs	150 lbs/inch	C	29 linear foot lbs/inch (ECT)
20 lbs	200 lbs/inch	C	32 linear foot lbs/inch (ECT)
35 lbs	200 lbs/inch	C or B/C Double wall	32 linear foot lbs/inch (ECT)
50 lbs	250 lbs/inch	B/C Double wall	44 linear foot lbs/inch (ECT)

Sample Box Maker's Certificate



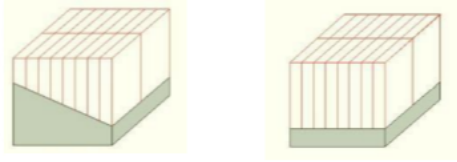
Corrugated Fluting Definitions

Type	Flutes per Length	Approx. Height*	Take-Up Factor**	
A-flute	33±3/ft. 110±10/m	.184 in. .467 cm	1.54	
B-flute	47±3/ft. 155±10/m	.097 in. .246 cm	1.32	
C-flute	30±3/ft. 130±10/m	.142 in. .361 cm	1.43	
E-flute	90±4/ft. 295±15/m	.062 in. .157 cm	1.27	
F-flute	96±4/ft. 316±15/m	.045 in. .114 cm	1.23	

* Not including thickness of facings.
** Amount of corrugating medium needed per unit length of flute.

Display Shipping Carton Requirements

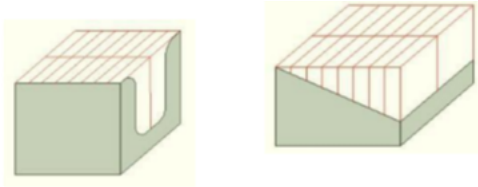
1) Display or PDQ Tray is shorter than product *Please refer to carton styles below



WT*	**Linear In.	Use Style
Up to 10 Lb	Under 48 In.	HSC
10 to 15 Lb	Over 48 In.	Endload
15 to 50 Lb	Over 48 In.	FOL Endload

*Please refer to carton styles below

2) Display or PDQ Tray is greater or equal to the height of the product



WT*	**Linear In.	Use Style
Up to 10 Lb	Under 64 In.	HSC
10 to 20 Lb	Over 64 In.	Endload
20 to 50 Lb	Over 64 In.	FOL Endload

*Please refer to carton styles below

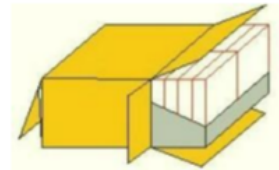
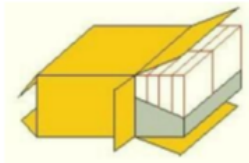
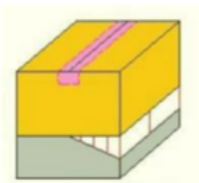
** Linear Inches is calculated by adding the length of the 4 bottom sides together.

Approved Shipping Carton Styles

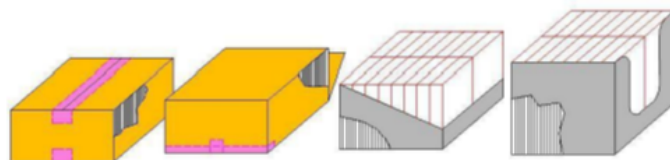
HSC Top Load Carton

Endload Carton

Full OverLap Carton



Corrugated direction must be vertical to the display orientation.



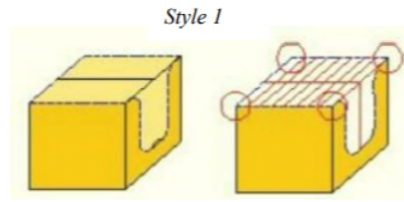
Tear Away Carton Design Styles

Tear away displays must be designed to tear cleanly. Finger holes, as shown on next page, must be available to reduce in store cutting.

Approved Styles

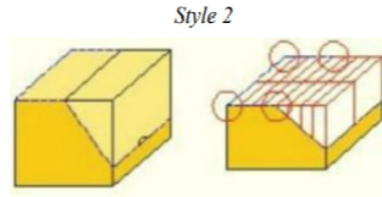
Style 1

Our preferred styles retain the most amount of strength in shipping. Points of the tray are the same height as the product on each of the four corners.



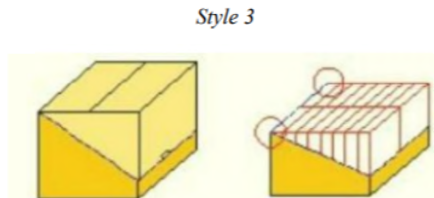
Style 2

4 points of the tray are the same height as the product.



Style 3

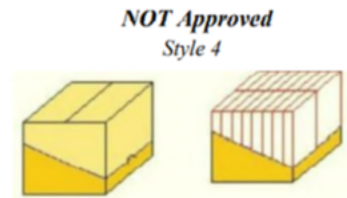
This style is approved but not preferred and has 2 corners that provide stacking support. Back of tray is the same height as product.



Not Approved Styles

Style 4

Tray is shorter than product and does not provide full support on any corners.



Carton Sealing

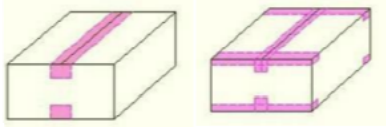
- Flaps must be taped or glued to keep the cartons tightly closed
- Multiple cartons must not be glued, strapped or taped together
- Strapping must not be used on individual cartons or master packs

Carton/Carton Shippable Inner Taping

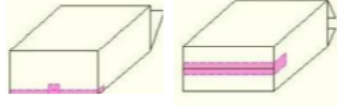
- Tape should be at least 2 inches in width and have sufficient holding power to fiberboard to ensure a secure seal
- Tape thickness should be at least 2 mils
- Tape should be centered on the seal and extend down each side at least 2 inches
- Full taping of all flaps, seams and seals is acceptable if all other recommendations are met

Examples of recommended taping styles

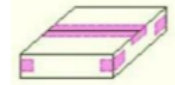
RSC Style Carton



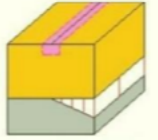
End Load Cartons Rolled End Tray



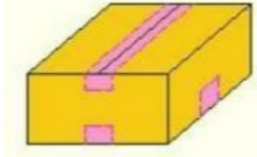
1 Piece Folder



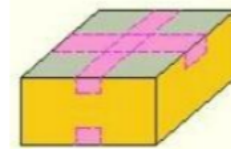
*Acceptable shipping carton tape applications for top loaded PDQ displays. (Double Tape Bottom)



Carton



Top View



Bottom View

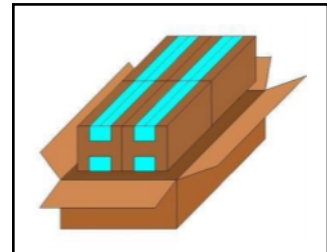
Inner Packaging Requirements

Inners in Shippable Packaging (Corrugated)

- After inners in Corrugated Packaging are removed from the master, they are considered shippable
- It is required that they survive the Family Dollar Distribution System and follow both the Carton Marking Requirements and Carton Shipping Strength Requirements

Inners in Non-Shippable Packaging (Non-Corrugated Packaging)

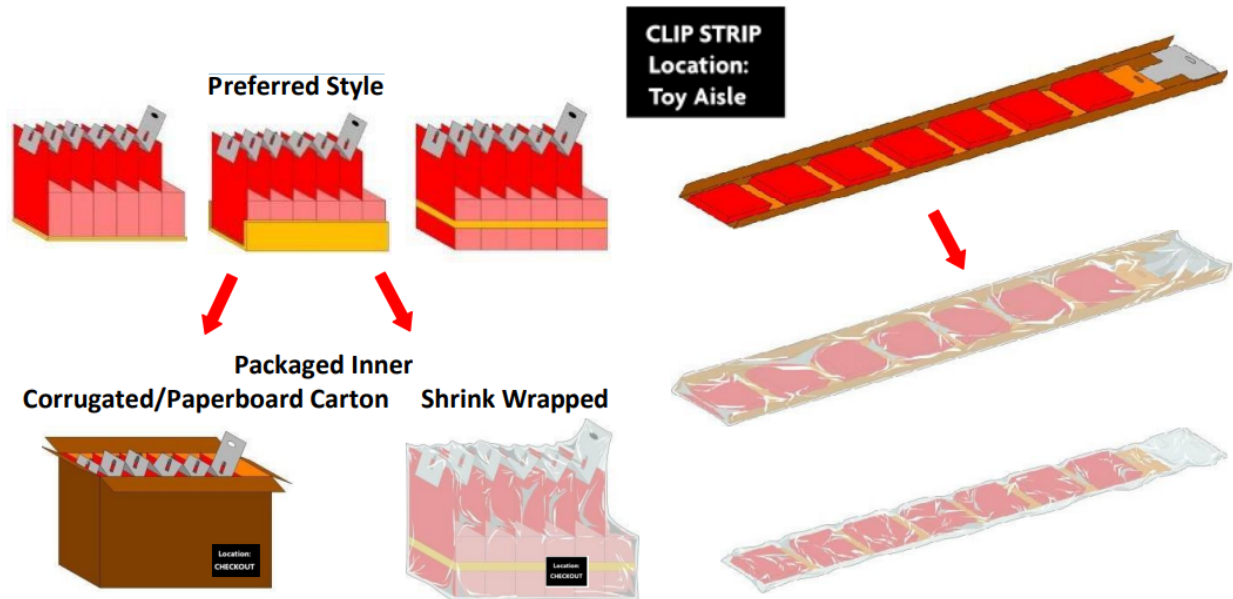
- Inners in Non-Shippable Packaging are NOT considered shippable
- These types of items are warehouse in "REPACK" and sent to stores in totes
- REPACK inners must minimally be wrapped in paperboard, cellophane, polybags, paper or poly film belly banding to hold the selling units together when shipping from distribution center to store



Clip Strip Program Requirements

1. Clip Strip Specifications
 - a. Maximum width - 5.00"; minimum width – 1.375"; maximum loaded length – 36"
 - b. Clip Strips must be made from a single piece of plastic material
 - c. Clip Strips must be at least 18 gauge, 18 mil, or .018" in thickness
 - d. Tag hole must be at least .1875" dia
2. Peg hooks are not acceptable
 - a. S-Hook must be galvanized and 1.5" tall and made from .080" diameter wire
3. All products must be pre-applied
4. Product must stay on Clip Strip throughout the distribution cycle
5. Clip Strips must be packaged individually

6. Banding, shrink wrap, bagging, corrugated or paperboard cartons, sleeves and tubes are acceptable
7. Shipping packaging must meet all standard Family Dollar strength, style and design requirements as well as Carton Marking Requirements
8. Single Deal Packs must ship in a separate Corrugated Carton
9. Where possible, maximize carton quantity up to the 50 lb. limit for cartons with Inner Packs
10. Polybags that are used to contain Clip Strips must follow the “Plastic/Polybag Over-packaging and Garment Bag Requirements” found under the Floor Ready Apparel Requirements
11. Family Dollar Store reserves the right to make changes to these requirements or request different requirements based on category or store location
12. The following are examples and are not the only acceptable ways to package Clip Strips in Repack Cartons
13. Polybags must be marked with SKU #, Department #, and Description



Floor Ready Apparel Requirements

Inner Packaging

- Inner packs should be in a poly bag and hangers rubber banded
- Where possible, maximize carton quantity up to the 50 lb. limit for cartons with inner packs
- Garments should lay lengthwise and flat in the carton with the front side facing up

Nominated Packaging Suppliers for Apparel Brands

- Recommended or Approved Suppliers must be used for printed packaging for the Family Dollar Brands:
 - Extremely Me!



- Just Be...
- Highland Originals
- Kidgets
- Pro Player
- Indent
- Failure to use approved Hanger or Trim Suppliers may result in additional charges for artwork approval or failed product testing due to out-of-spec trim.
- Special Instruction, by brand or manufacturing location, may be communicated regarding the use of specific hanger and/or trim suppliers. Otherwise, manufacturers may use the following suppliers for competitive bids.
- Sample Approvals
 - PDFs for scanning must be submitted for all bar coded packaging
 - Family Dollar must also see physical samples of printed packaging from “Recommended” suppliers
 - Physical samples from “Approved” suppliers are only required upon request from Family Dollar
- All suppliers listed below have been certified for quality, cost and capabilities of both volume and manufacturing to specs. Specs should be provided as part of your item quotes.

Hanger Styles and Suppliers

APPROVED HANGER STYLES	
Hanger Style	Description
FDT10MED	10" med. Wt.
FDT12MED	12" med. Wt.
FDT15MED	15" med. Wt.
FDT17MED	17" med. Wt.
FDT19HVY	19" Hvy. Wt.
FDB8PG	
FDB8PG	8" Pinch Grip
FDB10PG	10" Pinch Grip
FDB12PG	12" Pinch Grip
FDB14PG	14" Pinch Grip
FDB10SP	10" Pinch Grip Soft Pad
FDB12SP	12" Pinch Grip Soft Pad
FD4D8PG	
FD4D8PG	8" Coordinate Pinch Grip 4" Drop
FD4D10PG	10" Coordinate Pinch Grip 4" Drop
FD4D12PG	12" Coordinate Pinch Grip 4" Drop
FD4D14PG	14" Coordinate Pinch Grip 4" Drop
FD9D8PG	
FD9D8PG	8" Coordinate Pinch Grip 9.5" Drop
FD9D10PG	10" Coordinate Pinch Grip 9.5" Drop
FD10x13S	
FD10x13S	10" x 13.375
FD12x16S	12" x 15.75
FD10T4D	
FD10T4D	10" top with 4" Drop
FD12T4D	12" top with 4" Drop
FD10T7D	10" top with 7" Drop
FD12T7D	12" top with 7" Drop
FDSizer	Various Colors

RECOMMENDED SUPPLIERS BY REGION/COUNTRY	
North China	
Alliance Far East	Alliance Far East
Mainetti	Mainetti
SSI	SSI
Hangers Plus	Hangers Plus
Uniplast	Uniplast
Capco	Capco
Prosperity	Prosperity
Cambodia	
Prosperity	Prosperity
SSI	Mainetti
Uniplast	Uniplast
Indonesia	
Prosperity	Prosperity
Mainetti	Mainetti
SSI	
Vietnam	
Prosperity	Prosperity
Capco	
Mainetti	Mainetti
Uniplast	
SSI	SSI
India	
Thailand	
Unique Countries or Styles	



Additional Approved Packaging Suppliers

HANGERS	WEBSITE
ERA	http://www.erahanger.com/
GOH Hangers	http://www.goh-intl.com/
CWS - Capco	http://www.cwshanger.com/
Mainetti	http://www.mainetti.com/
Hangers Plus	http://www.hangersplus.us/
SSI -Sourcing Solutions	http://www.ss-intl.com/
B&G Plastics Inc.	http://www.bgintr.com/
Uniplast Industries	http://uniplastindustries.com
Terpac	http://www.terpac.com
Visconti Hangers	http://www.viscontihangers.com
Prosperity Products	http://www.prosperityhanger.com/

PRINTED CORRUGATED	WEBSITE
R-Pac	https://www.r-pac.com/
YFY/Jupiter	www.yfyjupiter.com
PCA – Packaging Corp. of America (Asia)	www.packagingcorp.com

DOMESTIC - ONLY	WEBSITE
Menasha	www.menasha.com
Hood Container	https://hoodcontainer.com/

LABELS & TRIM APPROVED	WEBSITE
R-Pac	https://www.r-pac.com/
SSI - Sourcing Solutions	http://www.ss-intl.com/
Avery Dennison	www.averydennison.com/
Natco Global	https://www.natcoglobal.com/
Nexgen	https://www.nexgenpackaging.com/
Pacific Packaging	www.pacpacworld.com
Quantum Packaging	www.quantumpkg.com/
Artco	http://artcoglobal.com/
CheckPoint	www.checkpointsystems.com

Plastic/Polybag Over Packaging and Garment Bag Requirements

Failure to meet the following Garment Bag Marking Requirements may result in charge backs initiated by Merchandising.

Plastic Bag Warning Statement (Required)

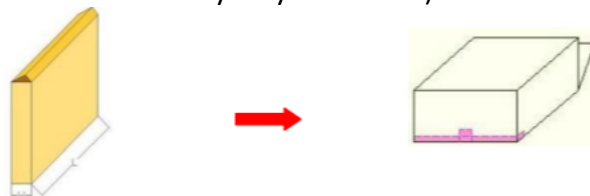
- a) Plastic bags with a thickness of less than 1 mil, in which a diameter is 5 inches or greater (when formed into a circle) used as packaging or packaging article for Domestic/Household use (e.g. laundry bag, garbage bag) shall contain a warning statement similar to below on both sides of each bag in English:
 - i. **WARNING: To avoid danger of suffocation, keep this bag away from babies and children. Do not use in cribs, beds, carriages or playpens. This bag is not a toy.**
- b) The warnings shall be printed clearly as to prevent the ink from smearing or upon a Gummed Label securely attached to the bag. It shall be contrasted by typography, layout or color from the contents of the bag and from other printed matter on the bag, if any.
- c) If the total length and width of the bag is more than 40 inches, the warning shall be repeated at 20-inch intervals
- d) Except Laundry Bag, the font size of the warning must adhere to the chart listed below:
 - i. This standard applies to all polybags or plastic bags that are used to contain, bundle or protect products

Total Length and Width of Bag	Size of Print
60 inches or more	At least 24 points
40 inches or more	At least 18 Points
25 Inches or more	At least 14 Points
Less than 25 inches	At least 10 Points
All Laundry Bags	At least 36 Points

Fragile Packaging Recommendations

These requirements are intended to aid in selection of Fragile Item Packaging. These requirements cover but are not limited to items containing glass, stoneware, porcelain, polyresin, candles, glassware, mirrors and lightly bound construction material.

- 32 ECT (Edgewise Crush Test Value) is the minimum recommended corrugated strength for Fragile Items.
- Cartons with “Length” L greater than 3 times the “Width,” W should have Full Overlap Closures. (Orientation of carton may stay the same.)



- Special packaging requests by Family Dollar Stores may be tendered.



- Special effort by the product and packaging supplier should be made to fill all voids with a protective packaging material.
- Family Dollar Stores prefer a recyclable material made from paper.
- Each item must be separated from adjacent items by a shipping filler or packaging.
- Cartons must be marked on 4 sides with Up-Arrows with the words “Fragile” below them.
- These arrows should be at least 25% of the height of the panel.
- If the carton contains glass “Caution Glass” should be marked on the carton in front at least 36 PT – Text can be stacked.
- A 4 side drop test where the carton is dropped once on each of its 4 “sides” should be passed.

- Review Weight and Drop Height:

Weight	Drop Height
2lbs. To 20.99 lbs	30 in.
21lbs to 40.99 lbs	24 in.
41lbs to 50.00 lbs	18 in.

- If any slight crush is found on the carton, it will not be counted as defective. The Carton Drop Test result is passed.
- If the carton has serious or open seams or if the product comes out of the carton damaged or malfunctioning after the test is performed, the test inspection result should be considered “failed.”

Display Packaging

Display Packaging General Requirements

Work with your Family Dollar Representative to develop the appropriate display for your product. Display and shipping carton must protect and contain product through the distribution cycle to the store until it is sold.

The following standards are requirements intended to assist suppliers in designing packaging to survive our distribution system and meet our presentation standards at the store. Please gain approval for any deviations from these requirements from your Family Dollar Representative. Taped displays are forbidden unless specifically requested. (Exception is footwear PDQ’s)

Display Corrugated Strength Requirements

Maximum Gross Weight	Bursting Test	Flute Size	Minimum Edge Crush Test
2 bs	125 lbs/inch	E - Flute	26 linear foot lbs/inch (ECT)
5 lbs	150 lbs/inch	E - Flute	29 linear foot lbs/inch (ECT)
49 lbs	200 lbs/inch	B - Flute	32 linear foot lbs/inch (ECT)

Shelf Display Dimensions Stadium Style Displays

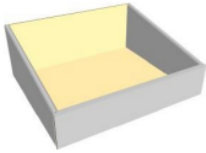
All Shelf Displays have maximum dimensions unless specifically approved.

- Depth: 15"
 - Please make all efforts to keep displays at 5", 7.5" or 15" depths
- Height: 12"
 - Gain approval from buyer for displays over 12" tall
- Width: 36"

Shelf Display Dimensions Stadium Tray Design Style

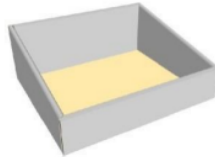
Stadium Style Displays have a front lip that is lower than the back wall. Sidewalls and front lip must fold all the way over so that natural corrugated color cannot be seen.

If product completely hides back wall, display back may be natural corrugated color.



DISPLAY #1

If product does not completely hide back wall, display must fold over to cover back wall.

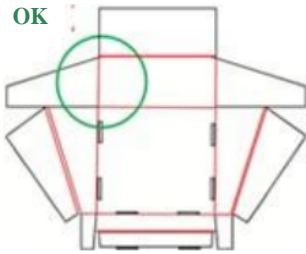


DISPLAY #2

Stadium Tray Design Style

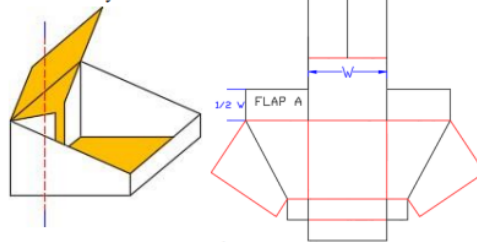
Family Dollar prefers the Design Styles Display #2A, B, D and Display #20 below. If selecting Style B, no display will be approved with short side flaps. (See Drawing "Display 2B")

Display 2A



Display 2B:

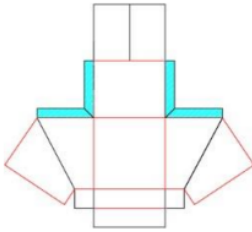
- Side Flaps (Flap A) must meet in middle of back (W). They must be $1/2W$
- They must also be at least 5" wide



Side panel flaps meet in middle

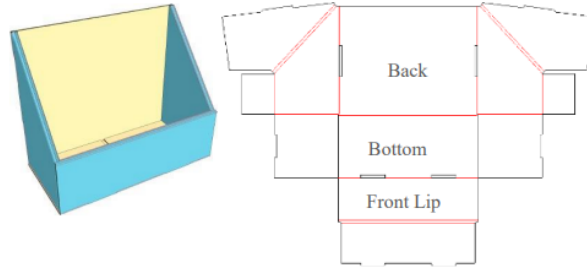
Display 2C:

- Short Side Flaps
- This display style is **NOT allowed** at Family Dollar

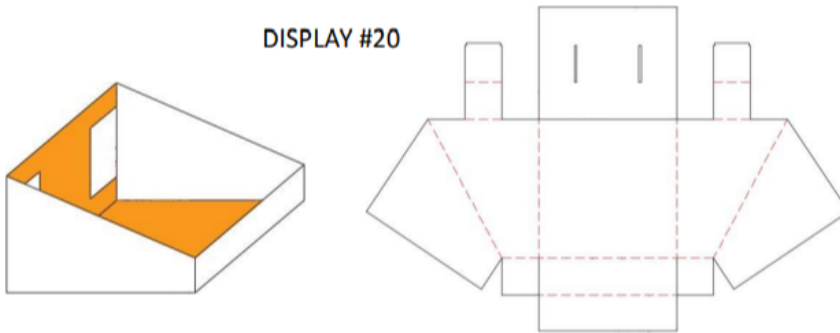


Display 2D (NEW):

- Double bottom no back
- Back can be added here
- Preferred Design

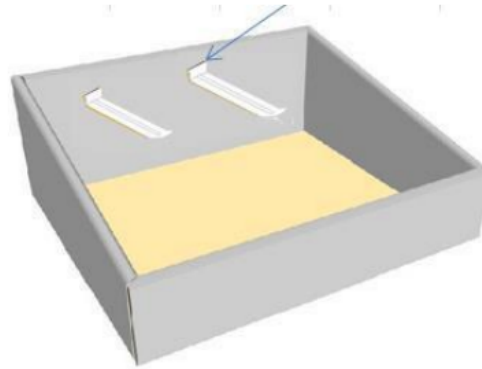
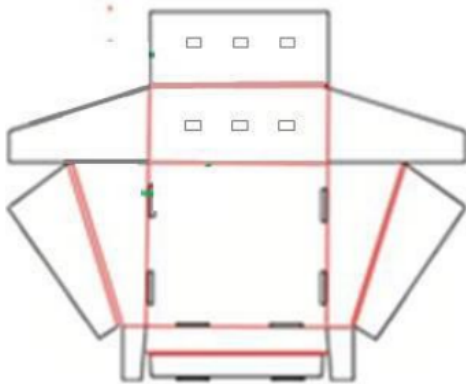


Locked Back Stadium Style Pegged Stadium Style PDQs (angled sides)



Pegged Stadium Style PDQs (Angled Sides)

Should be at least 1" space



DISPLAY #12



Product Hooks

Metal hooks are not allowed

Butterfly Style Hooks are Preferred

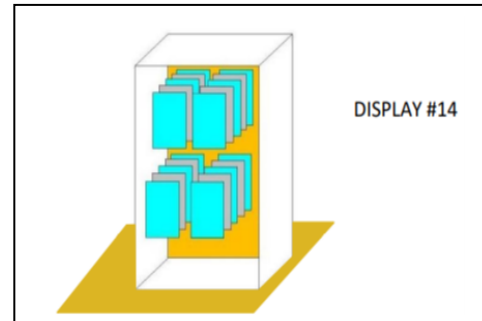
Maximum weight per hook is 3lbs.

Hook length should match display depth.

Pegged Shadow Box (Straight Tray Style)

Dimensions:

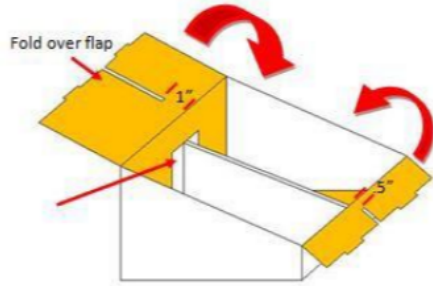
- Depth MUST be between 4" to 7.5" deep to ensure product is seen and that it will stand on the shelf
- Peg hooks may be 4"-6" length
- Height may not exceed 12"
- These are not power panels please see page 70 for hanging power panels



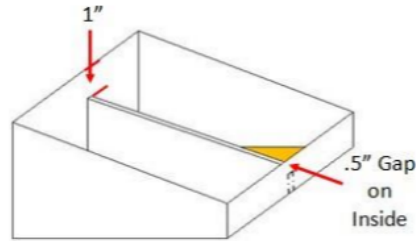
Display Section Dividers Tall Wall Displays

Please follow the guidelines below for displays with product spacing dividers, to ensure structural integrity of the Packaging Display, PDQ or Tray.

To reduce display tearing on shelf, leave
AT LEAST 1" of space on back panel and
AT LEAST .5" of space on the front panel.



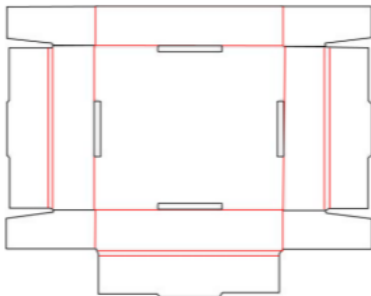
“Wings” of divider should be at least .75” wide.
 Wings may be glued but must be secured with a
 tabbed fold over flap as well.



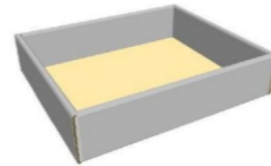
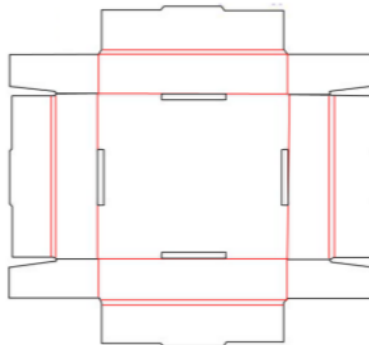
Straight Trays

All counter trays must have fully overlapped sides so that
 no raw corrugated edges are showing.

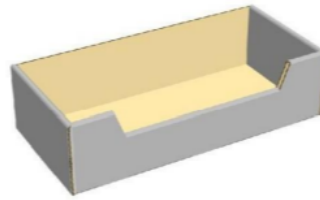
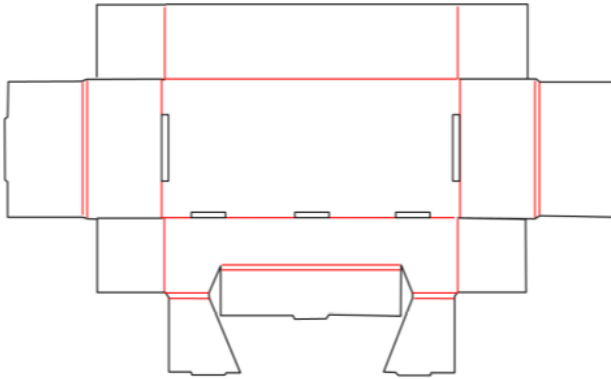
DISPLAY # 3 - No Back wall



DISPLAY # 4 - Back Wall roll over

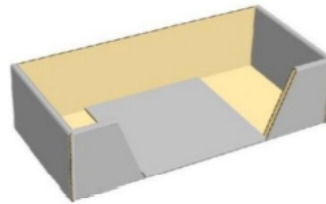
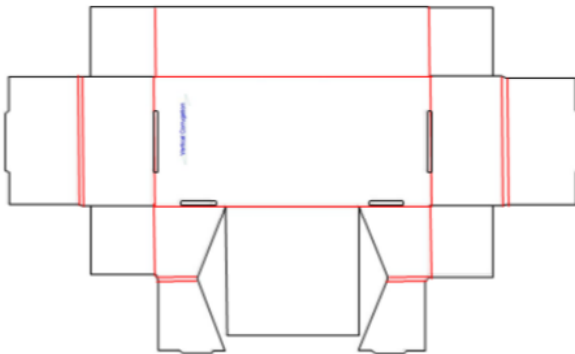


Straight Tray with Half Front Lip



DISPLAY #5

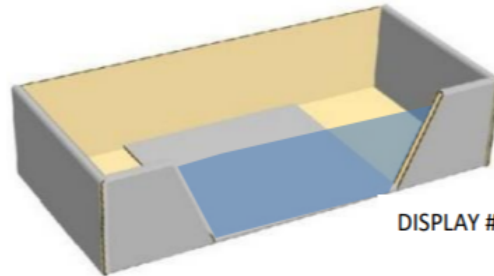
Straight Tray with No Front Lip



DISPLAY #6

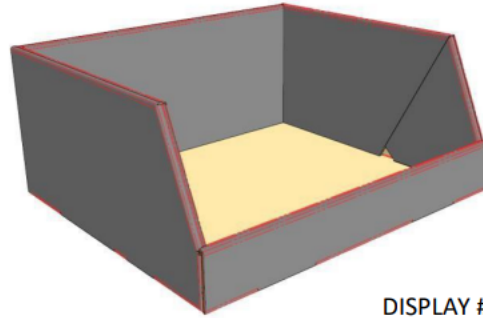
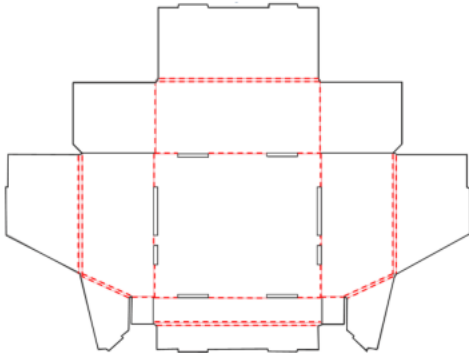
Straight Tray with No Front Lip – Clear poly panel

Use diecut found directly above.
Clear PVC sheet at least 16mil or .0016" thick
Do not use glue or double sided tape to adhere plastic,
unless instructed. Please use the display style below.



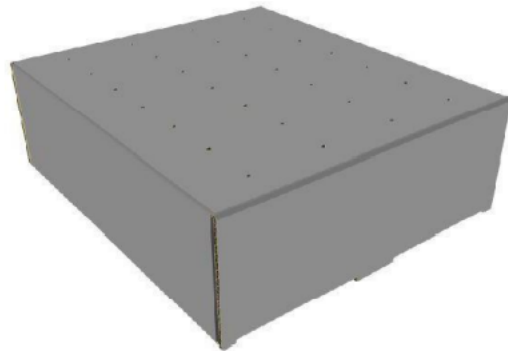
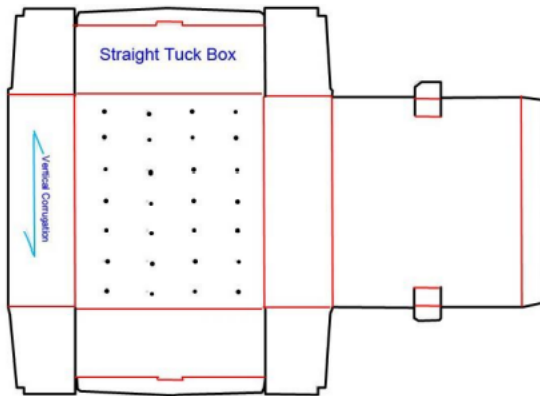
DISPLAY #15

Double Angle PDQ Tray



DISPLAY #8

Straight Tuck Box with Foam Insert



- For displays that require the product to stand on a narrow stick use this style. Completely filling with foam the inside of the fully enclosed display box is the approved way to complete this Style Display.

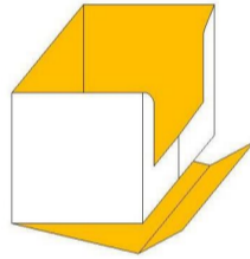
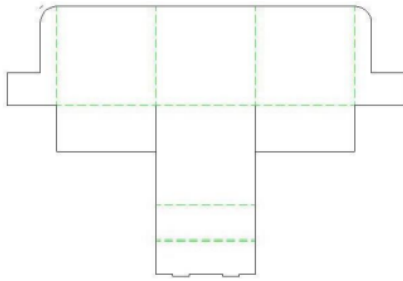
DISPLAY #7



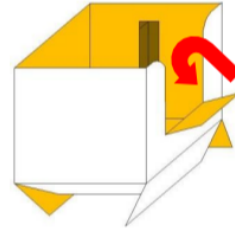
Tall Wall Displays

Use this display style with sidewalls to help product stay upright. If the total weight of the product is less than 20 lbs. and the display is not intended to be double stacked, raw corrugated edges are acceptable.

Full roll over solid bottom
(PREFERRED Style)



Display Front Lip
MUST Roll Over

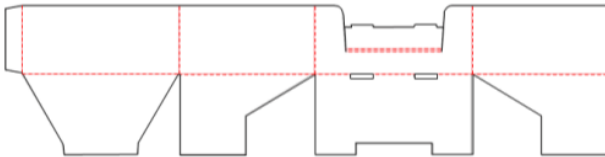


DISPLAY #16

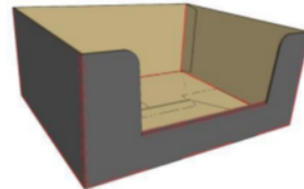
This style of display must have a taped bottom

- Angled side versions of this display are also approved

1-2-3 Style Bottom for PDQ Tray



DISPLAY #17

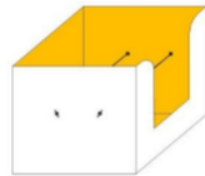


1. Keeping Product Upright

Displays holding tall product should have corrugated “fins” or elastic bands with barbs to hold product upright.

- Fins should be at least 24 PT Paperboard or 29 ECT E-Flute Material
- For tall displays with thin product use an Elastic Cord with Metal Tabs to hold the product in place.
- Utilize stair steps made from corrugated to separate different size or different graphic products.

Paperboard/ Corrugated
Product Holders “Fins”



Elastic with Metal Barbs



Stadium Style Tall Wall PDQ Tray

For Light Items Only! Max display weight less than 7 lbs.
Display Bottoms MUST be taped
Approval to use this style must be obtained before shipping



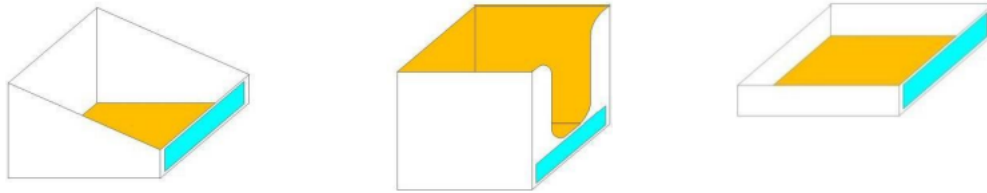
DISPLAY #18



2. Display Front Lip Graphics

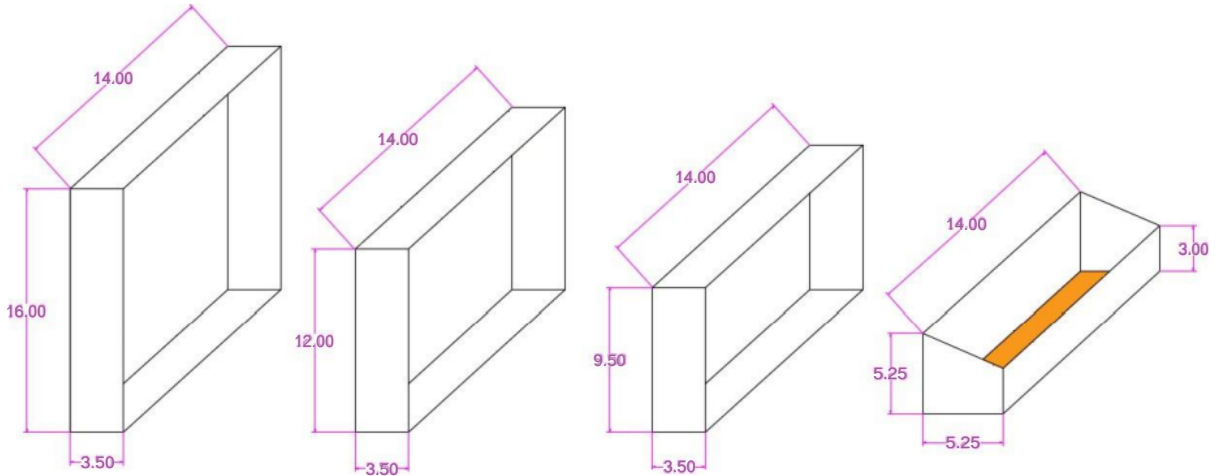
Program style guides must be followed for specific graphic needs. If display graphics material or application **are not** defined in a Seasonal Brand Style Guide or Private Brand Style Guide please follow the following instructions for graphics.

- Adhesive, machine and hand applied labels, litho labels and litho laminate labels are acceptable. Both paper and poly label stock are acceptable if they have a glossy UV (ultraviolet) coating.
- Labels must be centered on front panel of display.
- Label size must be .5" less than the width of the front face and 2" tall.
- Follow appropriate Pricing and Graphic Standards.

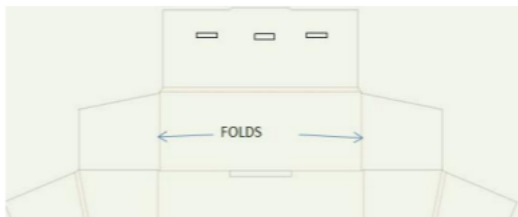


3. Spinner Rack PDQ's – Accessories

Below are the specifications for Accessory Products that set in our Spinner Racks. Spinner Rack PDQs should have white backing and side walls. These are the approved sizes. Approval must be gained from Family Dollar Buyer to use additional sizes.



Back walls must have 3 holes for Corrugated Wing Clips



Pegs must be 3", rubber or foam stoppers must be applied to ensure product stays on hook.



Product Hooks

Metal hooks are not allowed

Butterfly Style Hooks are Preferred

Maximum weight per hook is 3lbs.

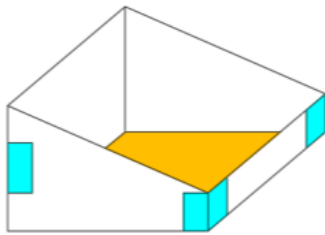
Hook length should match display depth.

4. Footwear PDQs

All Footwear PDQs

- TAPED EDGES: Footwear PDQs must have taped edges to aid in stability at store level.
- BAGGED PDQS: Footwear displays must be in full cartons.
- PDQs must be poly bagged for easy removal.
- Please select from Display Styles: Display 2 A or B, Display 20
- Dimensions
 - 4" front lip
 - 8" back wall height
 - 15" depth

Suggested Facings by Footwear Type

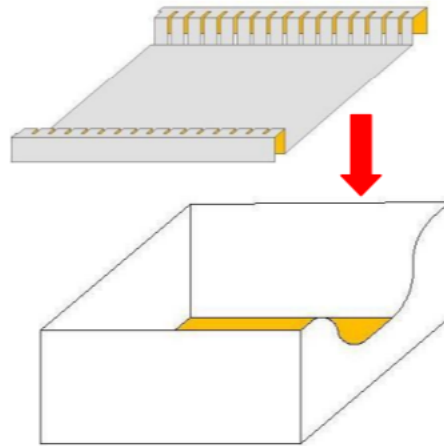
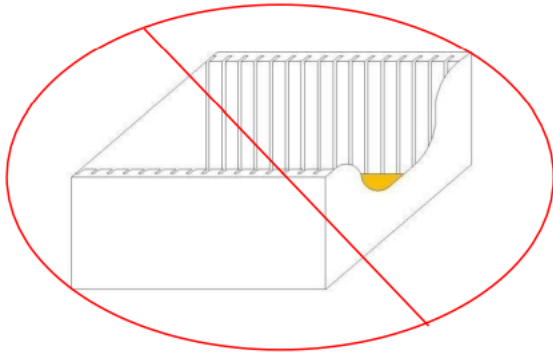


Range	Style	Wide	Deep
Toddler Sizes 5-10	Athletic	3	4
	Sandals	2	6
	Slippers	2	6
	Boots	3	4
Girls or Boys Sizes 11-3	Athletic	3	4
	Sandals	2	6
	Slippers	2	6
	Boots	3	4
	Tall Boots	2	3
Ladies Sizes 6-11	Athletic	3	4
	Sandals	2	6
	Slippers	3	4
	Flats	2	6
	Boots	3	4
	Tall Boots	2	3
Mens Sizes 8-12	Athletic	3	4
	Sandals	2	6
	Slippers	3	4
	Boots	2	3

5. Shipping Dividers and Fillers

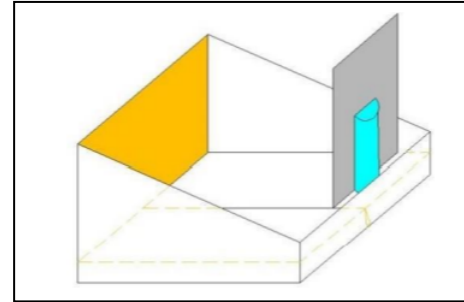
If product is intended to be displayed in rows and columns it must be held during shipping. Fragile product that may break must not be allowed to move freely.

- Corrugated or paper board dividers are acceptable.
- Corrugated or paper board dividers, fillers or spacers that are intended to be removed by store associates can be Natural Brown Color.
- Corrugated or paperboard dividers, fillers or spacers that are intended keep the product upright and are not removed until the display is empty must be White.
- PVC or PET spacers/dividers that are intended to keep the product spaced correctly and are not removed until the display is empty must be CLEAR. Black is not accepted.
- Foam is an acceptable way to protect the product while shipping, however paperboard or corrugated is preferred.
- Foam that stays in the display to hold product while it is on display must be White.
- Foam that is removed by the store associates may be any color.
- Shopping experience for the customer is very important. Products that may fall forward or are not visible while displayed must be supported by slotted trays, dividers and wedges to lean the products back.
- Family Dollar discourages the use of built in slotting intended to align product. This can severely reduce the strength of the display. We prefer that a slotted tray or divider is used.



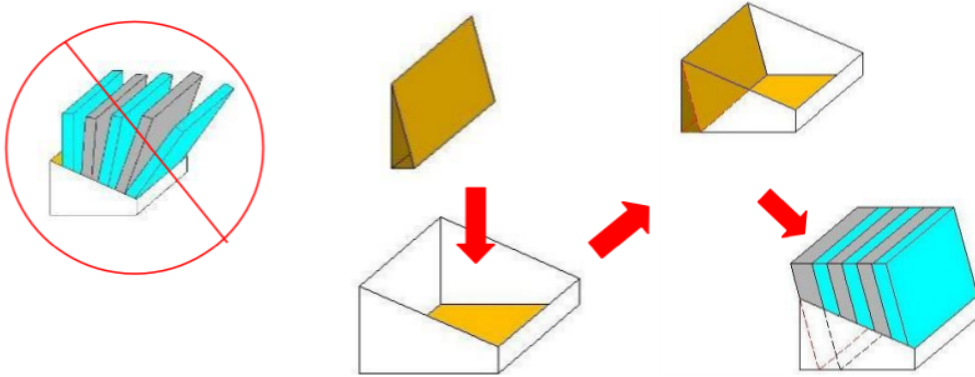
6. False Bottoms

False bottoms are acceptable. If the 2.5" front lip height covers important product information, it is ok to raise the product up with a "False Bottom." False bottoms are considered fillers or dividers and should follow the same material standards as the above "Shipping Dividers and Fillers" requirements.



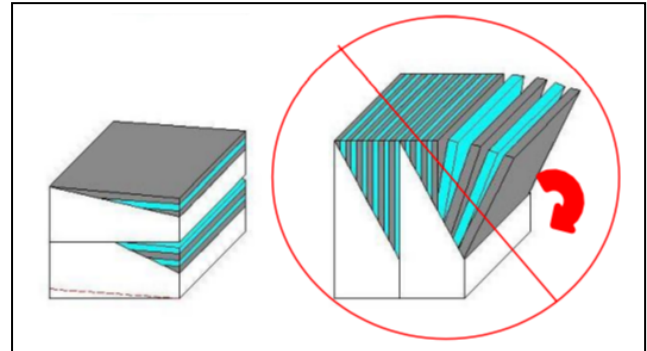
7. Product Orientation

Use angled dividers to direct product to lay backward in the display or PDQ.



8. Display Bottoms

Products like binders, notebooks and picture frames that may fall forward in a shallow display should be placed flat (with Buyers approval) in a display that is designed to be stackable. It is acceptable to use an insert to tilt product slightly up and forward.



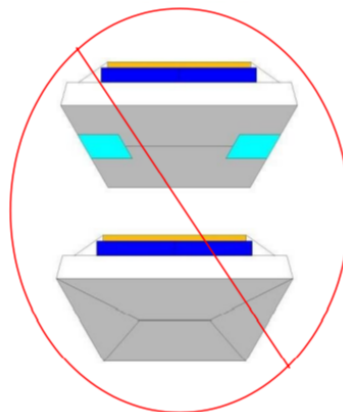
Family Dollar strongly discourages the use of displays that do not have solid bottoms. Heavier products may break through during handling and injure store associates or damage product.

Solid Bottom



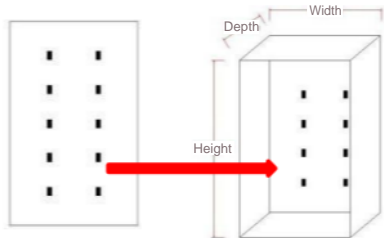
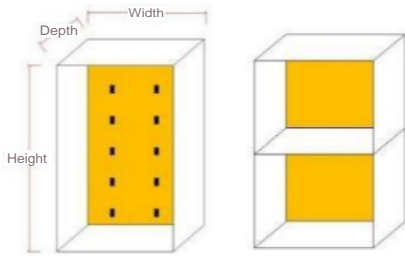
Approved

Taped Bottom

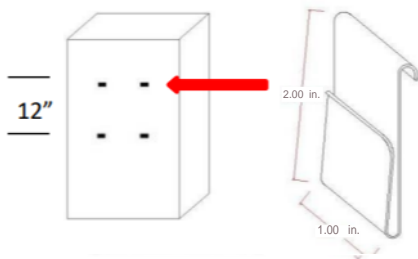
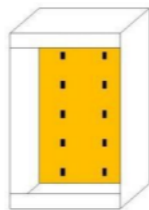


1-2-3 Bottom

Power Panel Displays



DISPLAY #11
Power Panels



Acceptable Outside Display Dimensions:

Width: 14" MAX **Height:** 12", 24", 36", 48" **Depth:** 4" to 5" To utilize the full height of the racking it is acceptable to ship 2-12" or 2-24" displays in the same shipping carton.

Maximum weight of full display:

12" Height – 15lb
24" Height – 25lb
48" Height – 35lb

Backer Board

If weight load per hook is over 2 lbs a backer board must be used

Graphic Headers:

Top or bottom headers for graphics are acceptable
2in is the maximum header height
Headers must be pre-installed
Headers should not add to the total height of the display.

Quick Clips:

Must be pre-installed to the back of the display
2 clips are required per display
Displays over 15 Lbs OR 24" must have 4 clips
If using 4 the distance must be 12" between the 2 rows (center of hole to center of hole) or display will not fully engage rack.

Clip Specifications:

Galvanized Steel: 1" wide, .020" thick.
Plastic: 1" wide, .088" thick

Product Hooks

Metal hooks are not allowed
Butterfly Style Hooks are Preferred
Maximum weight per hook is 3lbs.
Hook length should match display depth.
(4" to 5")

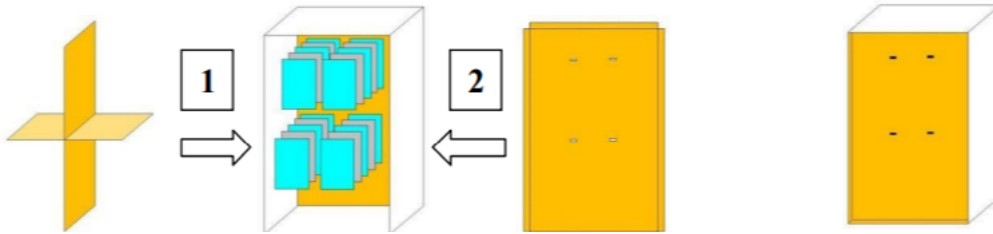
Product must be evenly spaced Left to Right and Top to Bottom
Peg hooks and product stack depth **must be less than 4"**

Display must have dividers, filler or spacers to prevent product from swinging during shipment. All displays must ship flat on their back in an "Endload Carton."



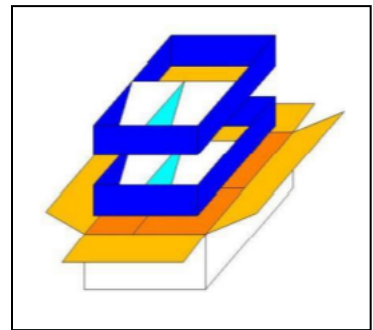
Family Dollar has found that the safest way to protect product is to lock peg hooks in place and reduce product swinging during shipment. Below is a recommended way to accomplish this.

- Place spacing divider between all rows of product.
- Place corrugated headspace filler, with holes that correspond to peg locations, on top of product.
- Any deviation from this standard must receive approval from the appropriate Family Dollar Stores Representative.



Calendars and Planners

Displays should be split into 2 sections. 24" tall and stacked inside a single shipping carton. Displays must be designed to keep product in place through shipping and selling season. Family Dollar approval of a completely packed sample is necessary.



Floor Display Labeling Giftable Products Easy Peel Labels

All Floor Displays and Shippers must be marked with a "Set Date" and a "Take Down Date."

- Preferred placement is on the bottom right base corners of 2 non adjacent sides
- If a display must be marked on its header, adhesive labels are not allowed.
 - Graphics must be pre-printed in bottom right corner of header

Acceptable Marking Applications for Header

**Printed with Graphics
"Litho"**

SET <Date>
TAKE DOWN <Date>

**"Knock-Out" Art
"Flexo"**

SET <Date>
TAKE DOWN <Date>

Acceptable Marking Applications for Base

SET <Date>
TAKE DOWN <Date>

LABEL – AT LEAST 1 x 2"

SET <Date>
TAKE DOWN <Date>

**"Knock-Out" Art
"Flexo"**

SET <Date>
TAKE DOWN <Date>

**Printed with Graphics
"Litho"**

* Background color Orange is just an example. Actual color will be color of display printing.

Giftable Products Easy Peel Labels

All giftable Family Dollar products must be pre-priced. Labels must be Easy Peel. Easy Peel labels can be removed by customers and leave little to no adhesive residue. The following label material and adhesive has been approved for most Family Dollar products, including apparel. Always check your product and label for Easy Peel compatibility. Products that do not have Easy Peel Labels or have labels fall off prematurely may receive chargebacks.

Easy Peel Labels Supplier:

Avery Dennison

Paper Labels: FASSON: 60#SG Elite/R5195/40#SCK - Spec# 18328

Poly Labels: FASSON: 2.3 White BOPP TC/R3500/40# - Spec# 78149

Hanging Blister Cards and Carded Product

CARD STOCK:

Single Layer Blister Card:

- 500 GSM (Grams Per Square Meter)
- Coated Two Sides and bright white on both sides (no gray backer cards)
- Printing process determined by artwork
- Flood UV resistant varnish required

Header Card/Double Layer Fold Over Card

- 400 GSM (Grams Per Square Meter)
- Coated One Side - Bright white both sides
- Printing process determined by artwork
- Flood UV resistant varnish required.

Heavier Card Stock or additional plastic reinforcements may be necessary and required to support product weight.

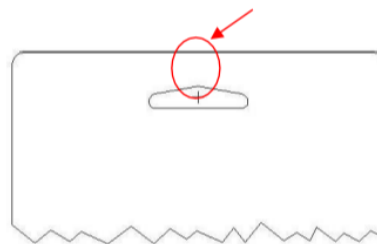
Hanging Card Design

It is essential to Family Dollar that packages hang straight and hang holes resist tearing. The following guidelines will help you select the appropriate packaging style to ensure safe product hanging. Please use the following chart to determine a recommended Hang Hole Distance. Thickness for hanging cards should be at least 18PT, .016" thick.

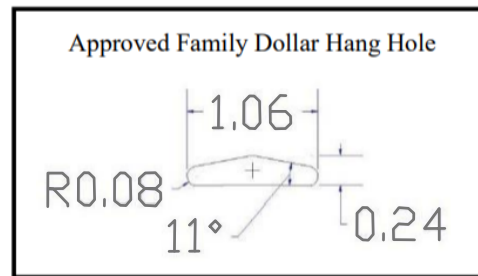
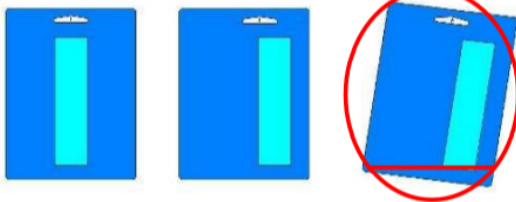
Family Dollar Hang Hole

Packaging Material	Reinforcement Type	Hang Hole Distance
Plastic Pouch	None	0.50"
Pastic Pouch	Plastic	0.25"
Paperboard	None	0.375"
Paperboard	Fold over	0.25"
Paperboard	Plastic Sheet	0.25"
Plastic Sheet	None	0.25"
Corrugated	None	.0375"

This is the "hang hole distance."



Adjust hang hole alignment so product hangs straight.

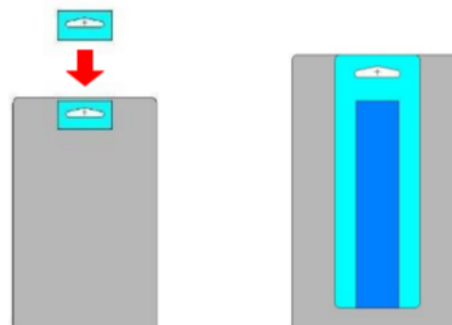
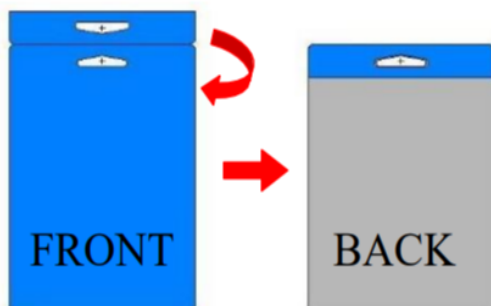


Hang Hole Reinforcement

Glued Card Fold Over

Adhesive Plastic Reinforcement (.016" PVC)

Thermoform Extension

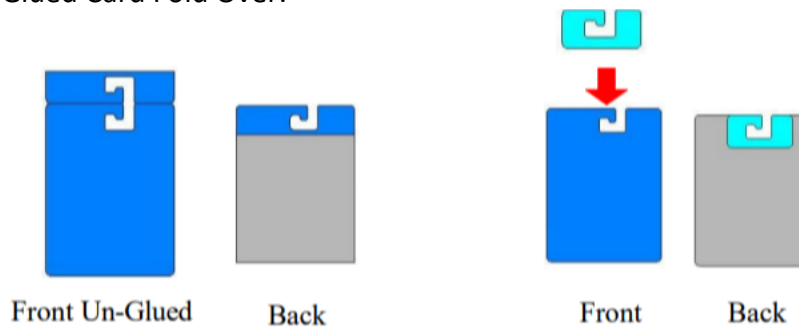


Hanging Packaging for Products with Multiple Styles/Colors

All carded hanging product including thermoforms, bags or pouches with header cards, or clamshells must have a J-Style Hang Hole if it has multiple colors, sizes, styles or shapes. This allows the customer to easily evaluate different styles and select the appropriate one.

- Carded J-Hook Style Hang Hole, must have reinforcement
- Adhesive Plastic Reinforcement, must have minimum 16 Gauge (.016") PVC

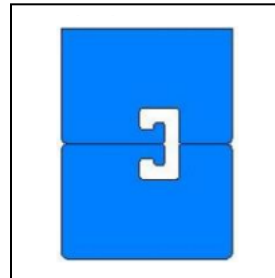
Glued Card Fold Over:



1. Hanging Pouches or Bags

These must have paperboard or Poly Coated Paper Hang Holes. Each graphic card must fold in half for double thickness.

- All items over 6oz / 170g must have a plastic reinforcement. The reinforcement may be affixed with adhesive or sandwiched between 2 layers of glued paperboard.
- PVC or PET Clamshells with J-Style Hang Holes do not need reinforcement if plastic thickness is greater than .018in or .45mm thick



2. Plastic Hook Hanger

Various types of plastic hooks are acceptable. Please get Family Dollar approval. Hook must be thick enough so that it does not bend or break when hanging.

- Suggested J-Hook style dimensions align so that packaged products hang level.

